

Mspace High sleeper bed



The perfect gaming high sleeper studio bed. Solid, robust and with a trendy dark grey+red color that is non-scratch, water repellent, and easy to clean. With a bed sized 120x200cm and a 90kg weight resistance, it is the perfect all-in-one solution. Complete structure made of 25mm board and carbon fiber edgebanding. Fitted with red metal bars, 3 book shelves and matching red staircase. Nonslip bands are supplied, as well as 2 red metal handles. Includes a large desk with a 2 screen capacity or large 50" TV. Desk can be placed in two different heights. Open wardrobe solution equipped with a hanging rail. A red metal hook to hang headsets. The space under the upper bed can be used with a gaming chair, or fitted with a matching multi-function bed base that acts as: full bed, sofa or chaise-long, all in the same collection.

PRODUCT INFORMATION

| | | |
|-----------------------------------|--|--|
| Country of origin | Spain, Barcelona | |
| Product Type | High sleeper bed | |
| Collection | Mspace | |
| Product dimensions | W238 x D188 x H183 cm | |
| Weight (without packaging) | 195 Kg | |
| Warranty | 2 years | |
| Assembly | Unassembled. Step-by-step instructions | |

| Item no. | Colour | EAN |
|----------|------------------------|---------------|
| 5000 | Shade/Carbon Fiber/Red | 8428721081344 |

Material specifications

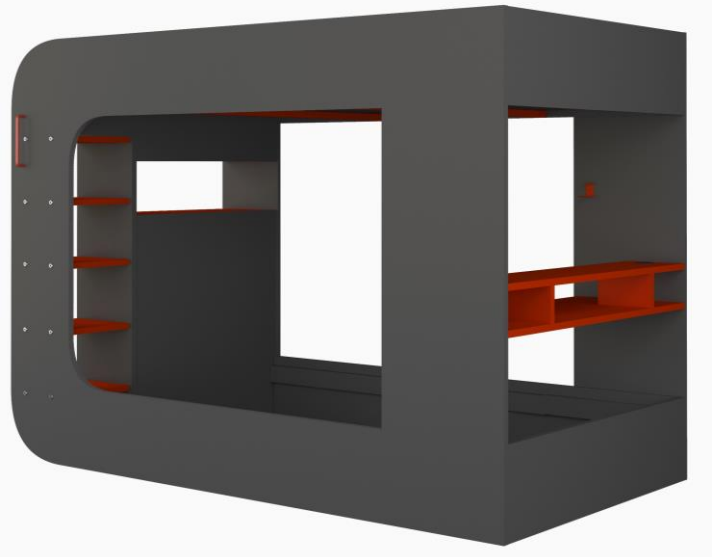
Melamine faced chipboard. Board thickness: main structure 25 mm, rest in 16 mm. Edgeband 1 mm. High quality metal hardware. Metal handles.

Features & benefits

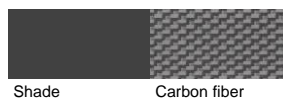
- ✓ Reversible bed assembly.
- ✓ Large storage capacity with shelves and clothes rail.
- ✓ Suitable for 200 cm mattresses.
- ✓ Large desk with capacity for 2 monitors or a TV up to 50".
- ✓ LED linear lights with remote control, 20 different colours and modes.
- ✓ Metal headphones hook included.
- ✓ Effective nonslip adhesive for stairs. Durable and quick to apply.
- ✓ Vent caps for mattress base.

Test & Certifications

- High sleeper bed
- Furniture. Bunk beds and high beds. Part 1: Safety, strength and durability requirements. [EN 747-1:2012+A1:2015](#)
- Furniture. Bunk beds and high beds. Part 2: Test methods. [EN 747-2:2012+A1:2015](#)
- Melamine faced chipboard.
- Formaldehyde emission testing - [UNE-EN 717-1:2006](#)
- Optimal surface properties, such as wear or scratch resistance in accordance with [EN14322](#).
- Antibacterial surface property in accordance with [ISO 22196](#)
- Led flexible strip.
- CE mark. [EN 55015:2013/ EN 61547:2009/EN61000-3-2:2014/ EN61000-3-3:2013](#)
- The RoHS. Dir. (EU) 2015/863 Annex II Dir. (EU) 2011/65/EU



Finishes



TRASMAN

DESIGNED & MADE IN
100%
BARCELONA